

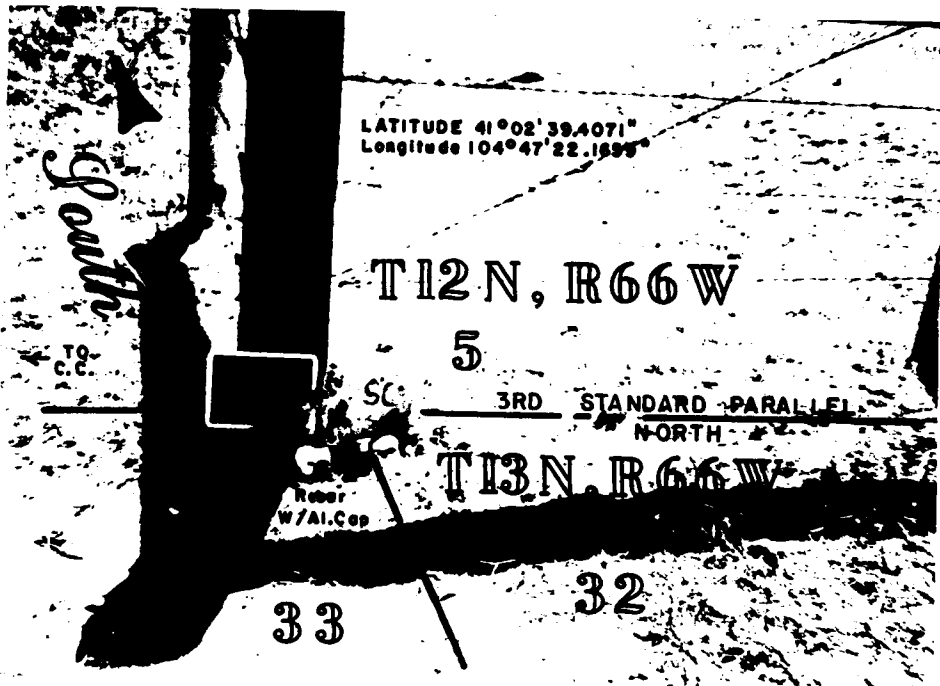
# State of Wyoming Corner Record

(In compliance with the *CORNER PERPETUATION AND FILING ACT*, Wyoming Statutes, 1977, Section 36-11-101, et. seq., and the Rules and Regulations of the Board of Registration for Professional Engineers and Professional Land Surveyors)

Reverse side of this form may be used if more space is needed.

Record of original survey and citation of source of historical information (if corner is lost or obliterated). Description of corner monumentation evidence found and/or monument and accessories established to perpetuate the location of this corner. Sketch of relative location of monument, accessories, and reference points with course and distance to adjacent corner(s) (if determined in this survey). Method and rationale for reestablishment of lost or obliterated corner.

Found A Granite Boulder West of a Rail Road tie fence corner. The stone is scribed with 2 hash marks on the West side and 4 hash marks on the East side and an S.C. on the North side. Set an Aluminum Cap on the North side as W.C.



FACING SOUTH

RECEIVED  
 LARAMIE COUNTY CLERK  
 CHEYENNE, WY.  
 1994 SEP -2 PM 3: 37  
 149887

Date of Field Work: \_\_\_\_\_ Office Reference: \_\_\_\_\_

### CROSS INDEX DIAGRAM

	1	2	3	4	5	6	7	8	9	10	11	12	13	14	15	16	17	18	19	20	21	22	23	24	25	
A																										
B																										
C		6																								
D			5																							
E				4																						
F					3																					
G						2																				
H							1																			
I																										
J																										
K																										
L																										
M																										
N																										
O																										
P																										
Q																										
R																										
S																										
T																										
U																										
V																										
W																										
X																										
Y																										
Z																										

Firm/Agency, Address  
 TERRESTRIAL SURVEYING & MAPPING  
 127 TERRY RANCH ROAD  
 CHEYENNE, WYOMING 82007  
 Telephone Number: (307) 634-9360

This corner record was prepared by me or under my direction and supervision.  
 SEAL & SIGNATURE



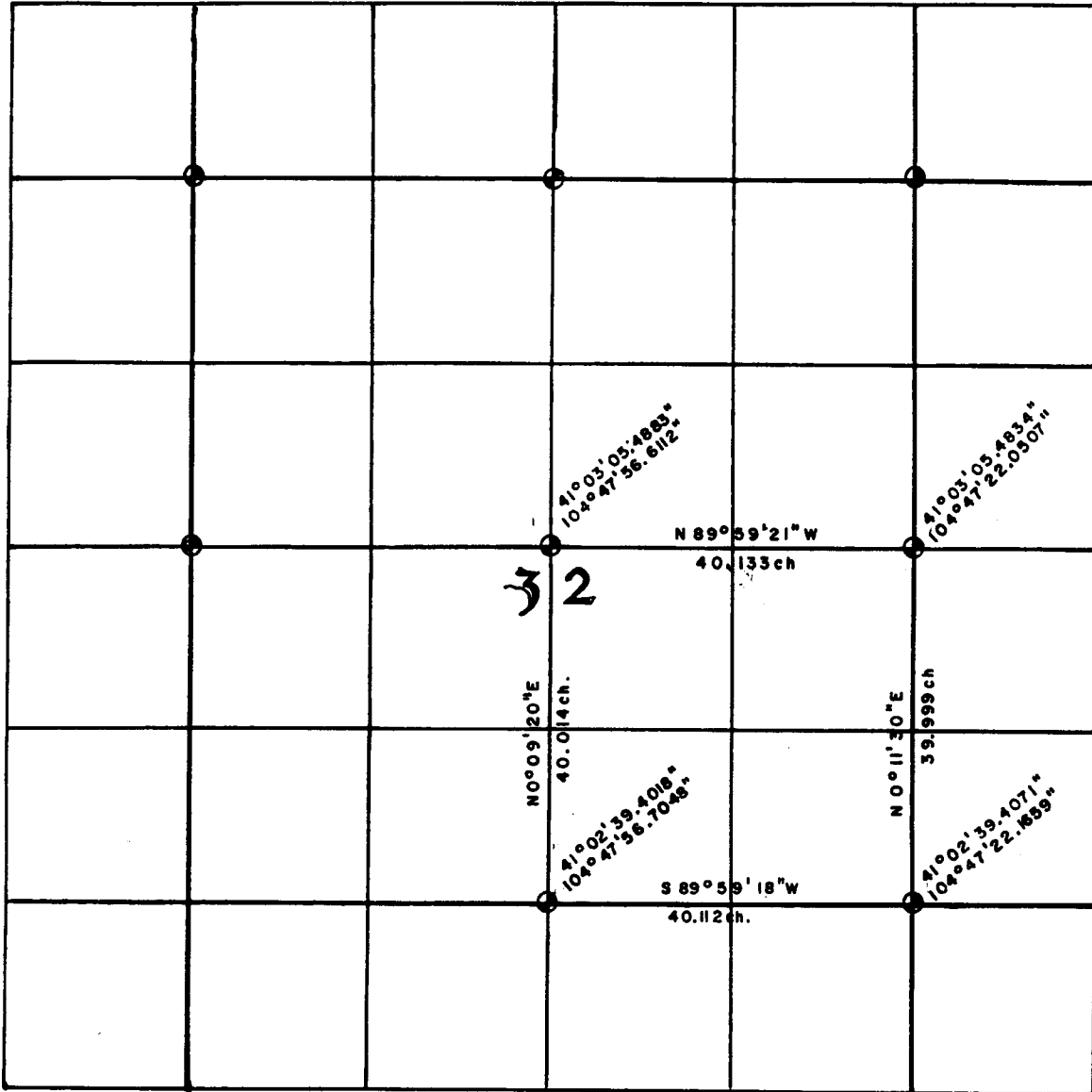
# Section Diagram

Project \_\_\_\_\_

Date: AUGUST 1994

Section 32 Township 13 NORTH Range 66 WEST Meridian 6TH P.M

County LARAMIE State WYOMING Scale \_\_\_\_\_



30	31	32	33	34	35	36	37
1	6					1	6
12							7
18							18
24							19
28							30
30	31	X				36	37
1	6	5	4	3	2	1	6

Notes: \_\_\_\_\_

\_\_\_\_\_

\_\_\_\_\_

\_\_\_\_\_

\_\_\_\_\_

\_\_\_\_\_

\_\_\_\_\_

TERRESTRIAL SURVEYING & MAPPING Co.  
P.O. Box 82, CHEYENNE, WYOMING 82003